



# EasyOne Air

## Portable and PC spirometer

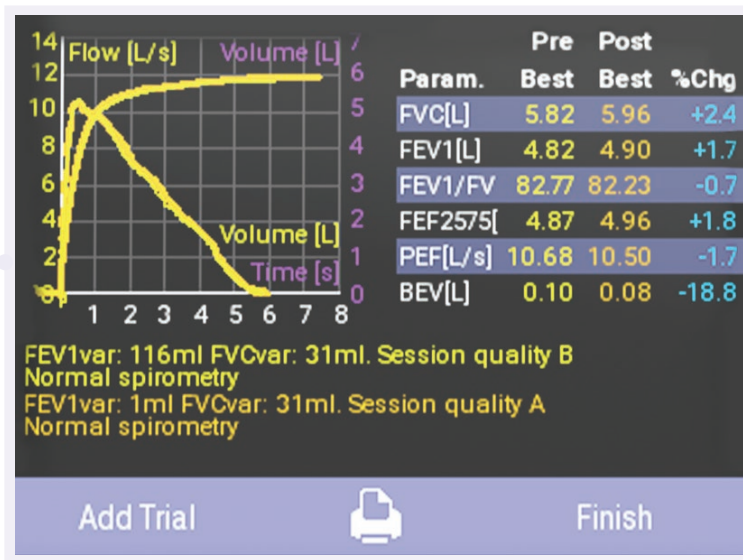
EasyOne Air is a flexible, accurate and proven spirometry solution. Easily connect to the PC with Bluetooth for real-time patient incentives, data exchange and EMR connectivity.

# Simple. Certain. Proven.

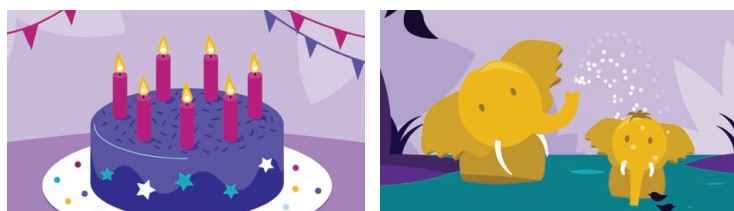


## Features

- Large color screen
- Easy navigation
- Calibration-free technology
- Rechargeable battery: >100 tests one cycle
- Bluetooth connectivity
- Flexible use
- Portable or PC mode
- Real-time animated incentives
- Real-time data transfer
- Proven EMR integration with top EMR/EHR systems



## Incentive screens



## NDD TrueFlow™

*makes the difference*

NDD's unique ultrasonic flow measurement is highly accurate in all flow ranges, independent of gas composition, pressure, temperature and humidity. **NDD TrueFlow** is a hygienic and resistance-free solution that does not require calibration during its lifetime.

## EasyOne Connect

EasyOne Connect software offers one database and one platform for all EasyOne point-of-care-solutions. Data management has never been easier.



## Specifications

**Test types:** FVC, FVL, SVC, MVV and Pre/Post testing

**Languages:** English, Danish, Dutch, French, German, Italian, Polish, Portuguese, Russian, Spanish, Swedish

**EMR connectivity:** EasyOne Connect

**Dimensions:** 3.4" x 6.1" x 1.4", 13 oz  
87 mm X 155 mm x 36 mm, 0.356 kg

**Standards:** ATS/ERS 2019 and 2005, NIOSH, OSHA, SSA Disability

## Part numbers

**2500-2A:** EasyOne Air spirometry system (US and Canada)

**2500-2INT:** EasyOne Air spirometry system (international)

**5050-50:** EasyOne FlowTube box of 50

**5050-200:** EasyOne FlowTube box of 200